



TECHNICAL ASSISTANCE PROGRAM:

BERLIN TOWNSHIP

CENTRAL OHIO GREENWAYS VISION REFINEMENT

WORKSHOP #1

MAY 17, 2023



MID-OHIO REGIONAL
MORPC
PLANNING COMMISSION

WORKSHOP #1: AGENDA



MORPC

WELCOME & PURPOSE

PROJECT REVIEW

Part I: Existing Conditions

Part II: Community Engagement

Part III: Analysis & Prioritization Factors

GROUP DISCUSSION

MAPPING EXERCISE

MAPPING EXERCISE REPORT OUT

NEXT STEPS & ADJOURN

DRAFT OUTLINE



MORPC

PART I – EXISTING CONDITIONS

- Community Description & Demographics
- Existing MUT Facilities & Gaps
- Proposed MUT Facilities
- Points of Interest / Destinations & Origins
- Bike & Pedestrian Safety
- Environmental and Physical Opportunities and Barriers

PART III – ROUTE ALTERNATIVES ANALYSIS

- Factors for Analysis
- Factors for Prioritization
- Off-Street MUT Facilities
- On-Street Supplementations

PART II – STAKEHOLDER & PUBLIC PARTICIPATION ACTIVITIES

- Biweekly Check-Ins
- Workshop #1
- Site Visit
- Workshop #2

PART IV – IMPLEMENTATION & FUNDING

- Timeline
 - Short-Term
 - Mid-Term
 - Long-Term
- Potential Funding Sources
 - Match Sources to Segments
 - Strategies for Grant-Writing

PART I – DEMOGRAPHICS



BERLIN TOWNSHIP

FAMILY HOUSEHOLDS W/ SCHOOL-AGED CHILDREN

PRIMARILY WHITE

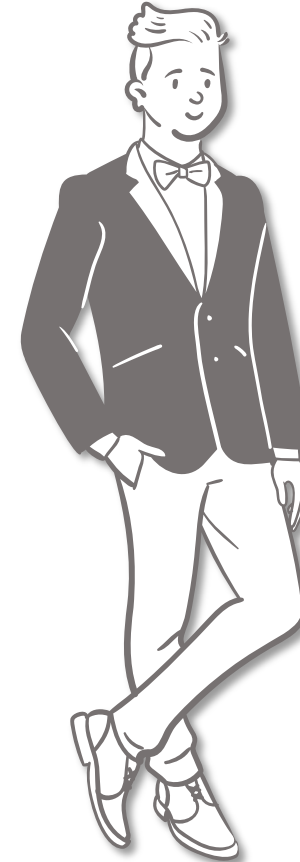
EXTREMELY AFFLUENT

EDUCATED

LOW HOUSING VACANCY

VEHICULAR COMMUTES

TYPICAL TRAIL USER (AMERICAN TRAILS)



ADULTS (OVER 18) – 84.2%

PRIMARILY WHITE – 93.1%

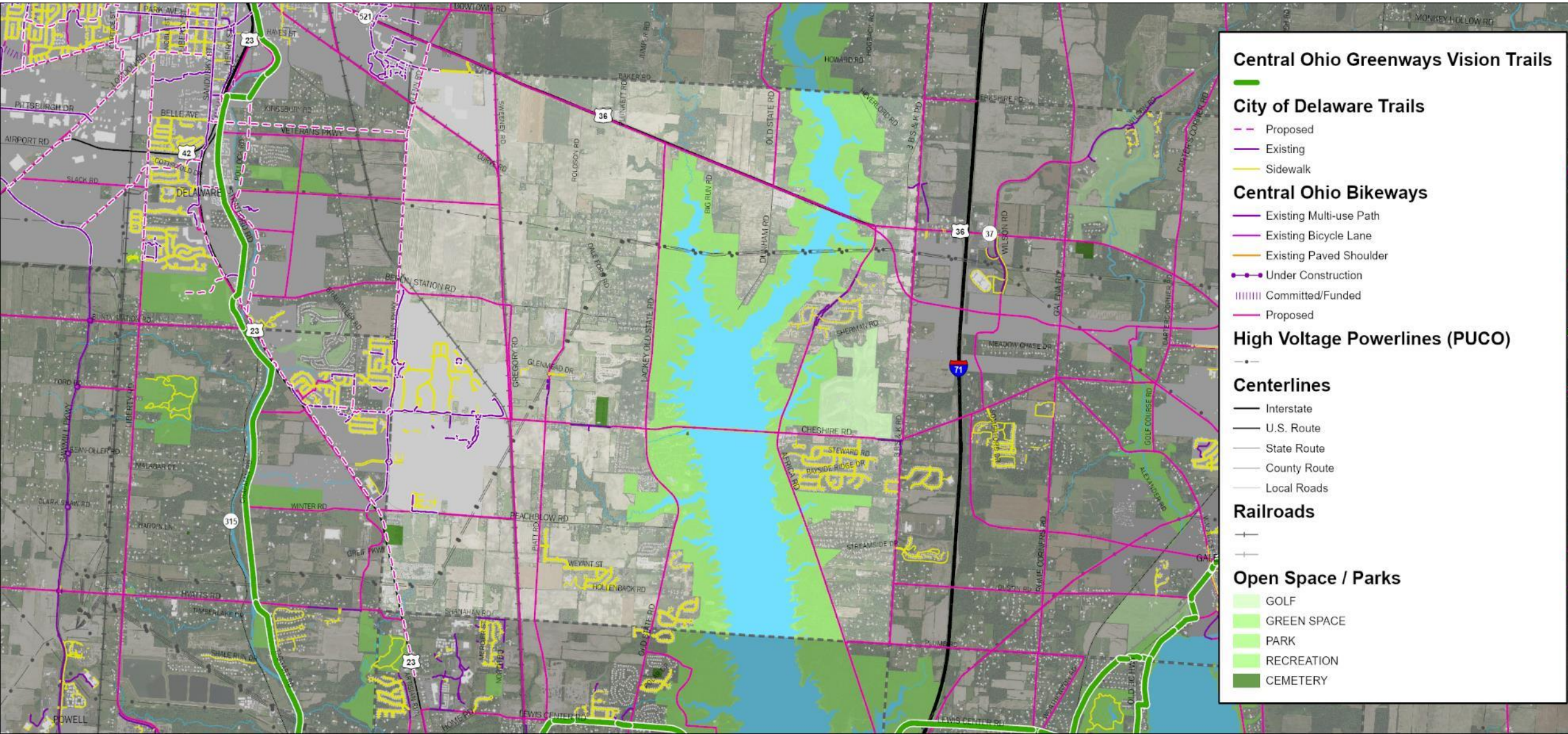
AFFLUENT (~\$100,000)

**EDUCATED (85%
ADVANCED DEGREES)**

PART I – EXISTING AND PROPOSED NETWORK



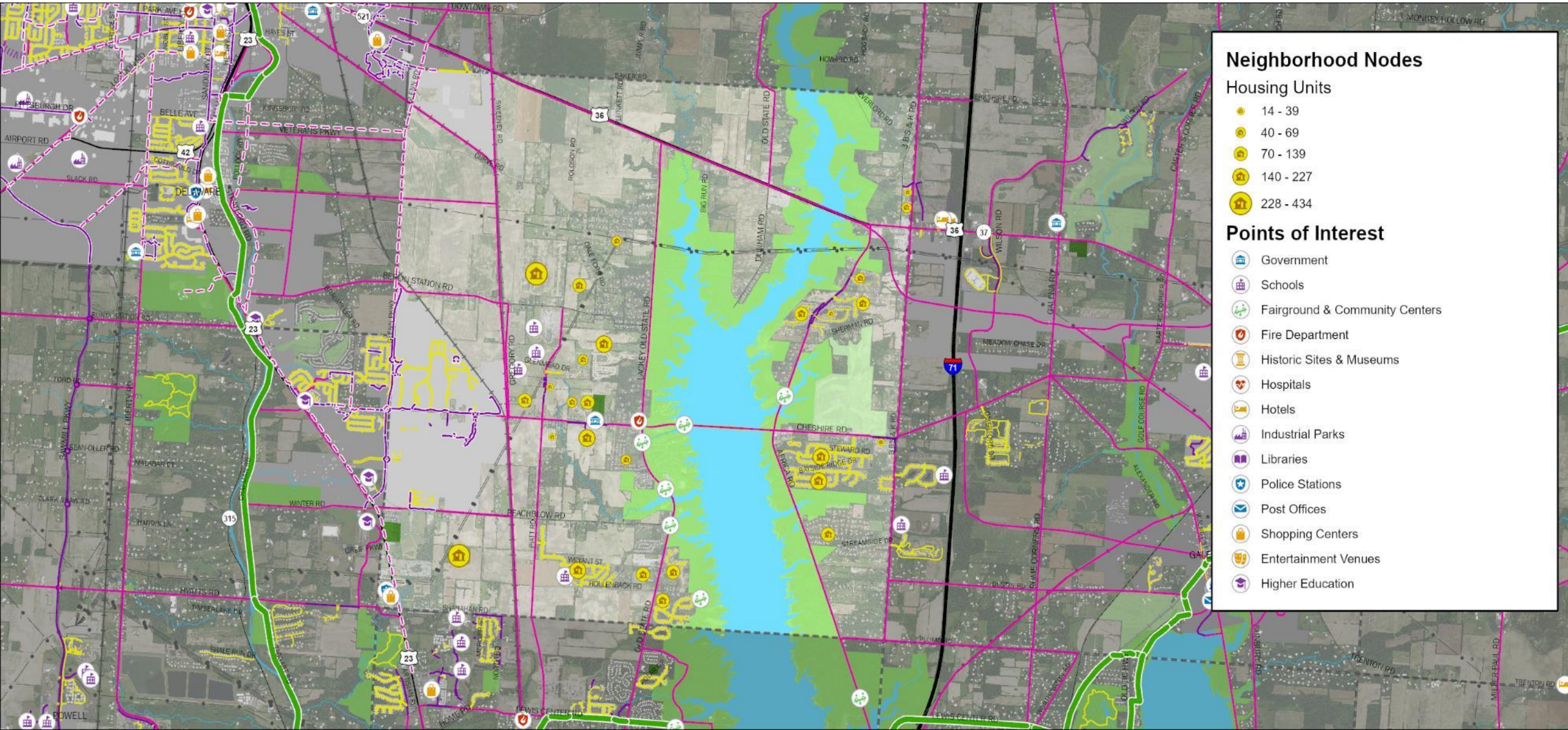
MORPC



PART I – POINTS OF INTEREST



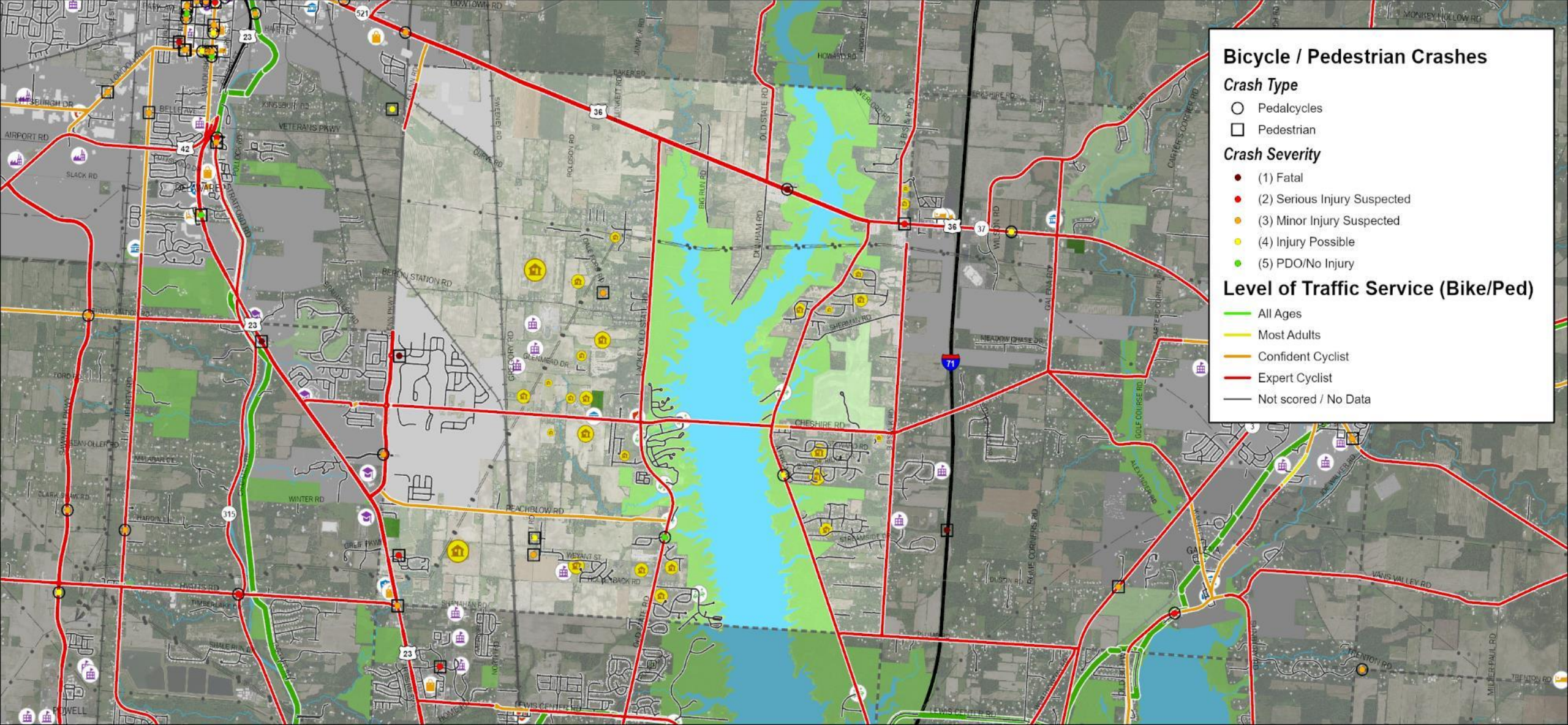
MORPC



PART I – SAFETY CONSIDERATIONS



MORPC



Bicycle / Pedestrian Crashes

Crash Type

- Pedalcycles
- Pedestrian

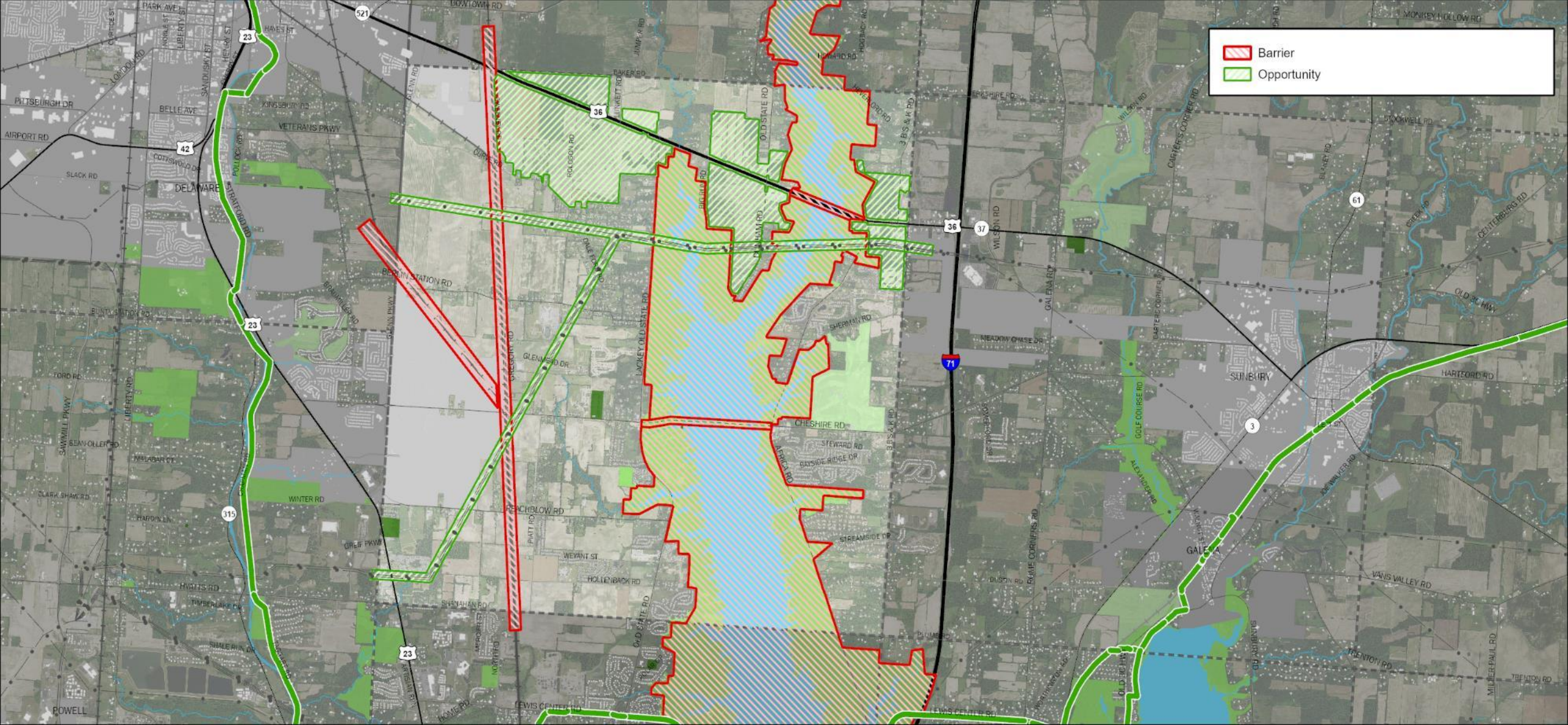
Crash Severity

- (1) Fatal
- (2) Serious Injury Suspected
- (3) Minor Injury Suspected
- (4) Injury Possible
- (5) PDO/No Injury

Level of Traffic Service (Bike/Ped)

- All Ages
- Most Adults
- Confident Cyclist
- Expert Cyclist
- Not scored / No Data

PART I – BARRIERS AND OPPORTUNITIES



PART II – COMMUNITY ENGAGEMENT



MORPC

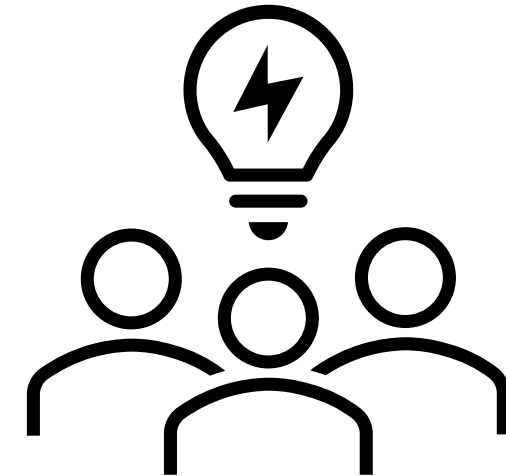
BI-WEEKLY CHECK-INS

JAN	FEB				MAR				APR				MAY					JUN				JUL					AUG				SEP	
30	6	13	20	27	6	13	20	27	3	10	17	24	1	8	15	22	29	5	12	19	26	3	10	17	24	31	7	14	21	28	4	11
M	M	M	M	M	M	M	M	M	M	M	M	M	M	M	M	M	M	M	M	M	M	M	M	M	M	M	M	M	M	M	M	M

WORKSHOP #1 (TODAY)

SITE VISIT (BETWEEN WORKSHOPS)

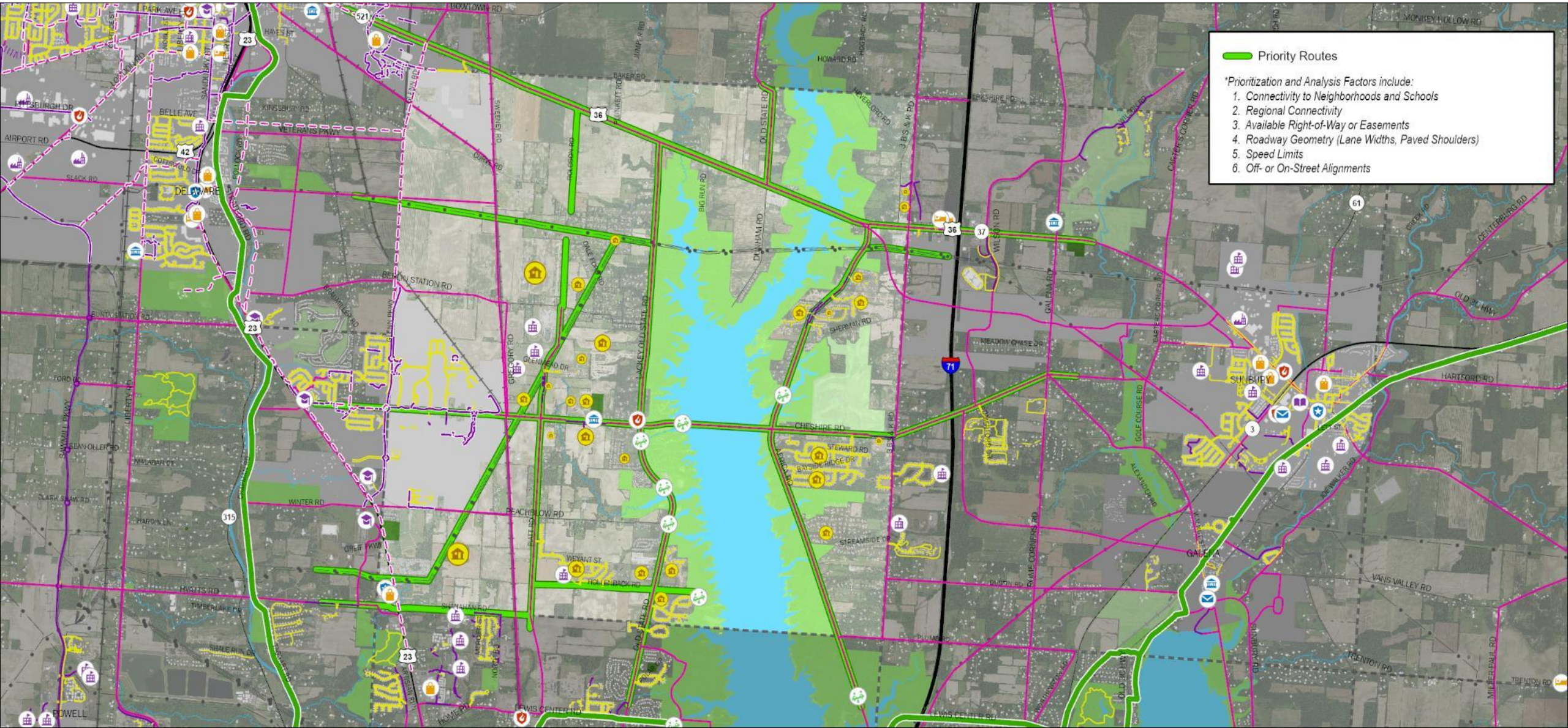
WORKSHOP #2 (JULY 19, 2023 – TENTATIVE)



PART III – ANALYSIS & PRIORITIZATION FACTORS



MORPC



Priority Routes

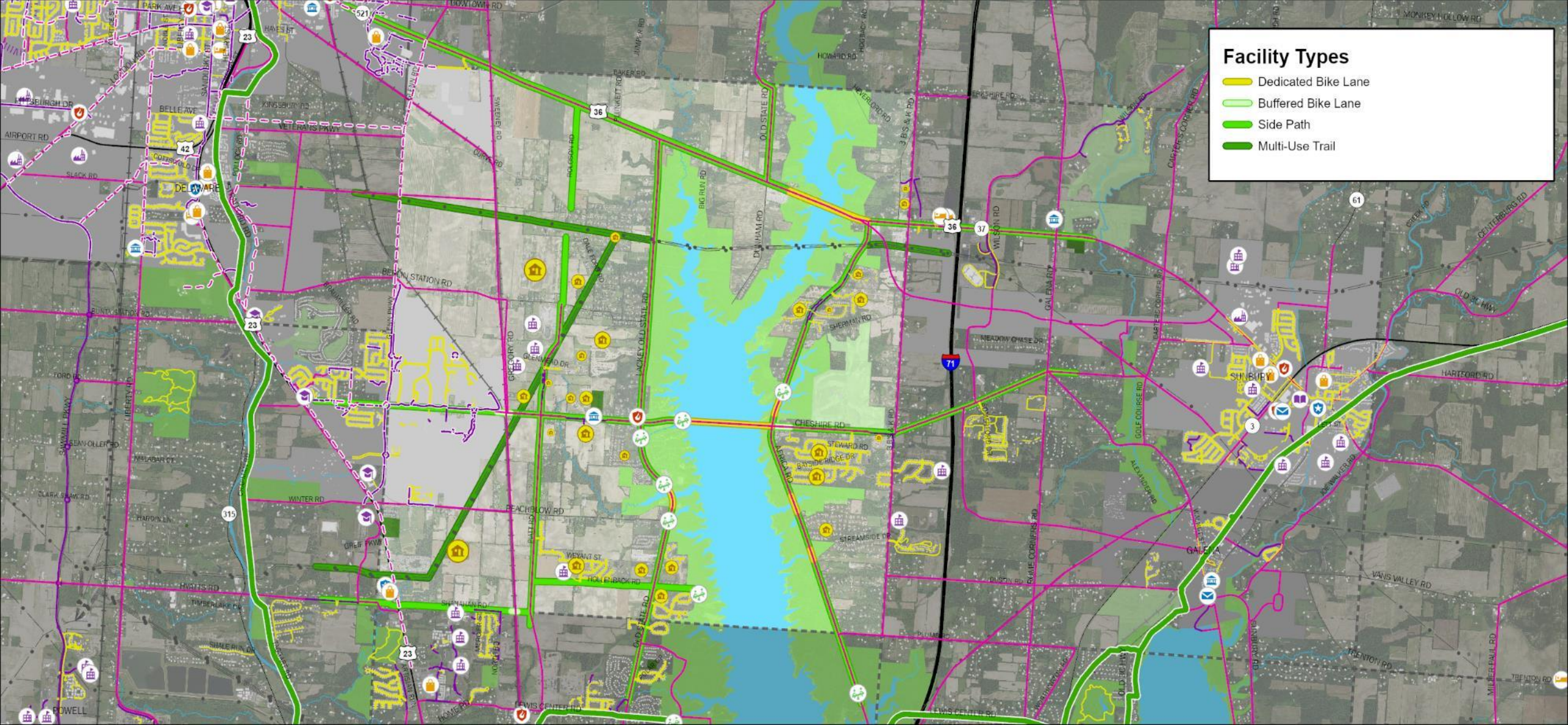
**Prioritization and Analysis Factors include:*

1. Connectivity to Neighborhoods and Schools
2. Regional Connectivity
3. Available Right-of-Way or Easements
4. Roadway Geometry (Lane Widths, Paved Shoulders)
5. Speed Limits
6. Off- or On-Street Alignments

PART III – OFF & ON-STREET FACILITIES



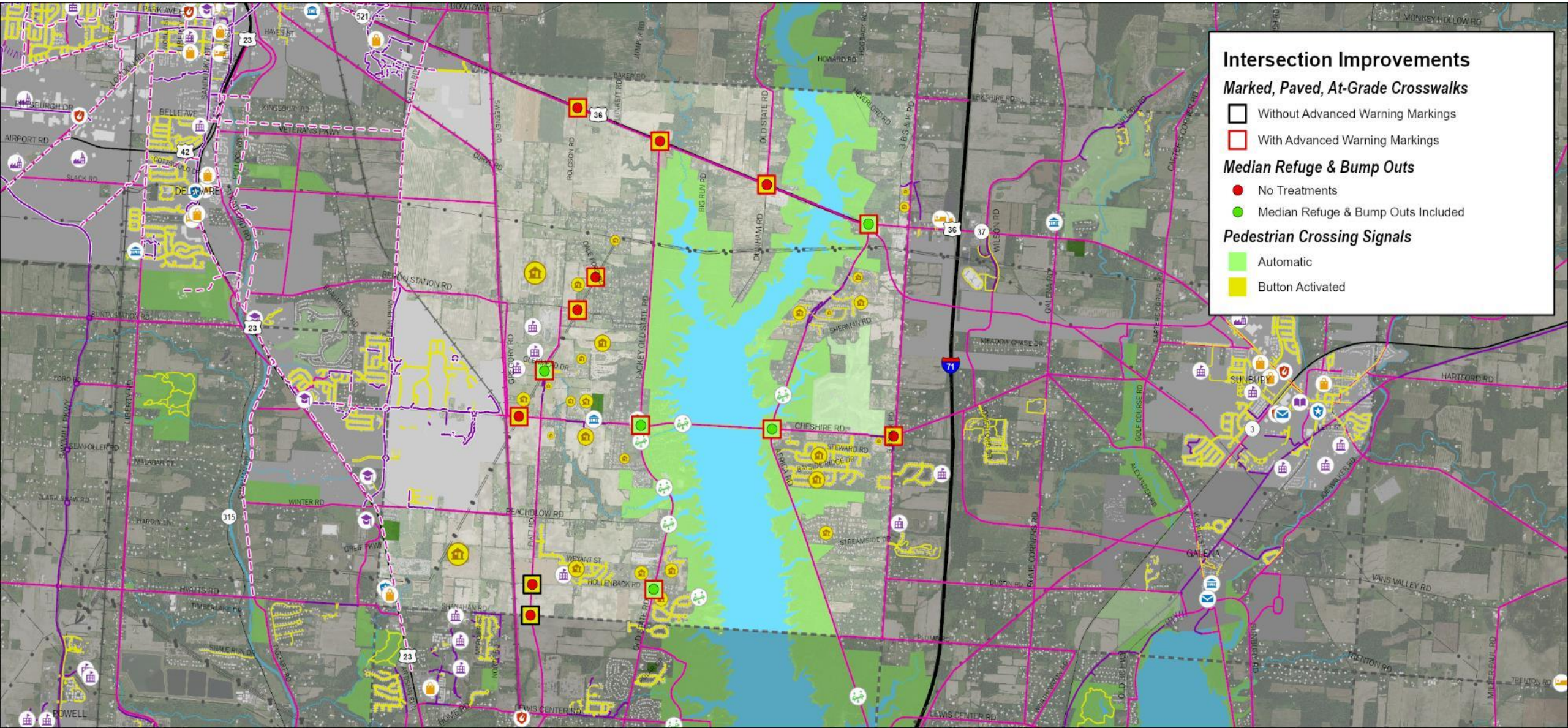
MORPC



Facility Types

- Dedicated Bike Lane
- Buffered Bike Lane
- Side Path
- Multi-Use Trail

PART III – INTERSECTIONS



Intersection Improvements

Marked, Paved, At-Grade Crosswalks

- Without Advanced Warning Markings
- With Advanced Warning Markings

Median Refuge & Bump Outs

- No Treatments
- Median Refuge & Bump Outs Included

Pedestrian Crossing Signals

- Automatic
- Button Activated

WORKSHOP #1: GROUP DISCUSSION



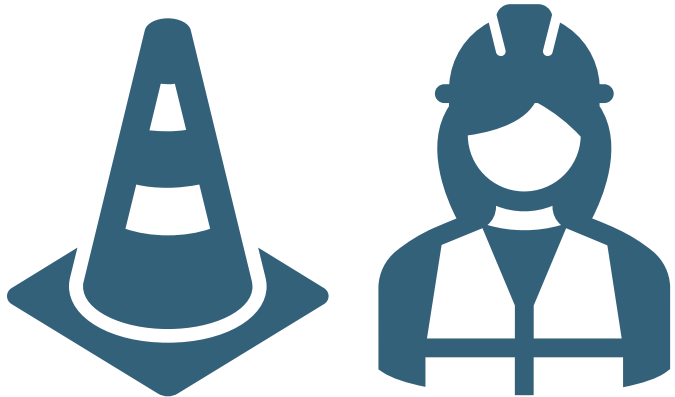
MORPC

DCEO ROADWAY PROJECTS

CITY OF DELAWARE: SAFETY ACTION PLAN DEVELOPMENT

ODOT ROADWAY PROJECTS

ORANGE TOWNSHIP: ACTIVE TRANSPORTATION PLAN



WORKSHOP #1: MAPPING EXERCISE

IDEAS / CONCERNS?

WHERE DO YOU SEE BICYCLISTS?

FAVORITE / SCENIC CORRIDORS?

HIGH SPEED / DANGEROUS ROADS?

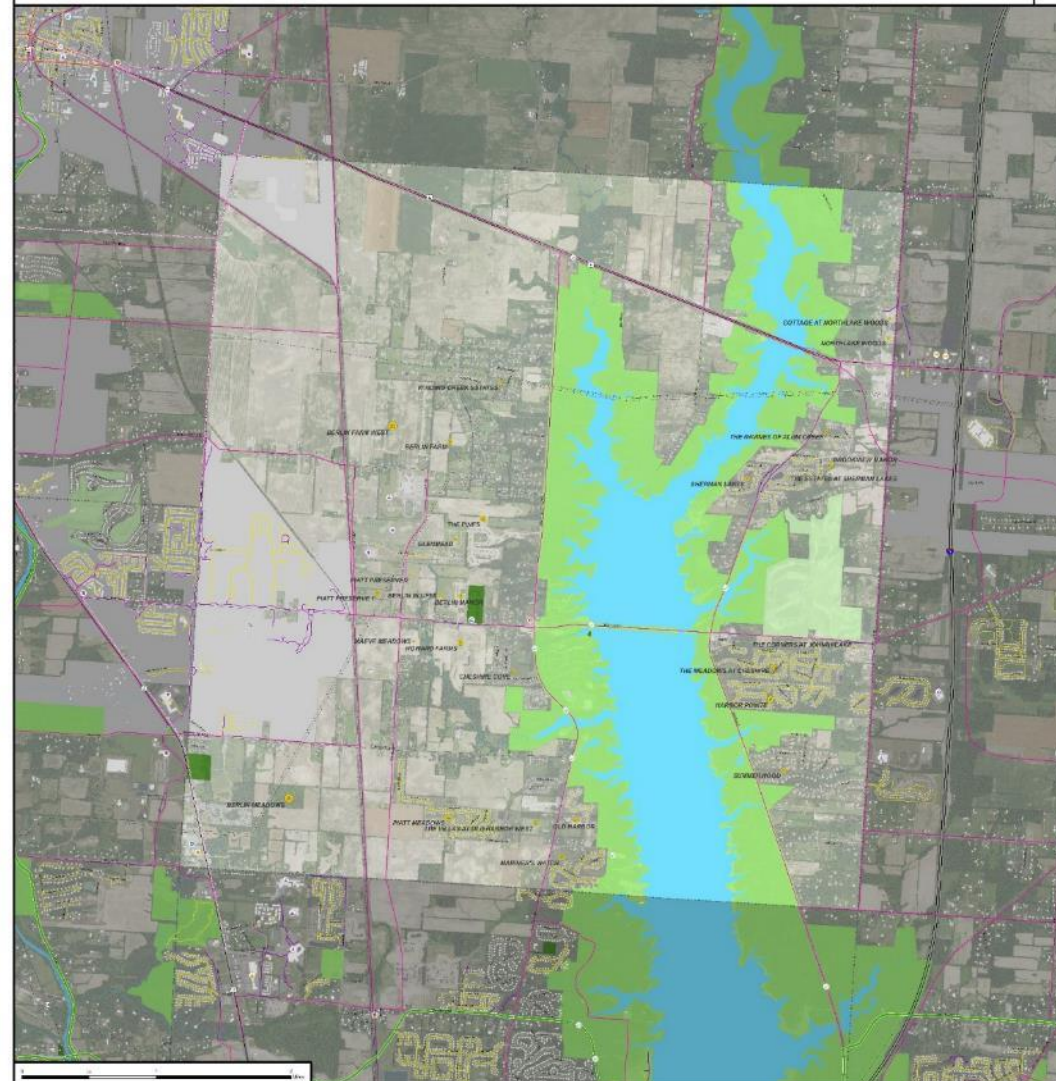
DANGEROUS INTERSECTIONS?

NARROW ROADS / OPEN DITCHES?

NEW / ADDED CONNECTIONS?

TECHNICAL ASSISTANCE PROGRAM 2023

Berlin Township: Central Ohio Greenways Vision Refinement



Points of Interest	Waterways
● Cemetery	— Arroyo
● Church	— Branch
● Fire Department	— Canal
● Gas Station	— Creek
● Hospital	— Ditch
● Library	— Embankment
● Medical Office	— Floodplain
● School	— Gully
● Shopping Center	— Lake
● Utility Station	— Pond
● Warehouse	— Stream
● Water Tower	— Tributary
● Water Treatment Plant	— Wetland

NOTES

Blank area for notes.

NEXT STEPS & ADJOURN

SITE VISITS

BI-WEEKLY CHECK-IN MEETINGS

WORKSHOP #2 (TENTATIVE JULY 19)

CONTACT

JONATHAN MILLER, MPA, AICP, GISP

Senior Planner

Mid-Ohio Regional Planning Commission

T: 614.233.4129

jmiller@morpc.org

111 Liberty Street, Suite 100

Columbus, OH 43215



MID-OHIO REGIONAL
MORPC
PLANNING COMMISSION

